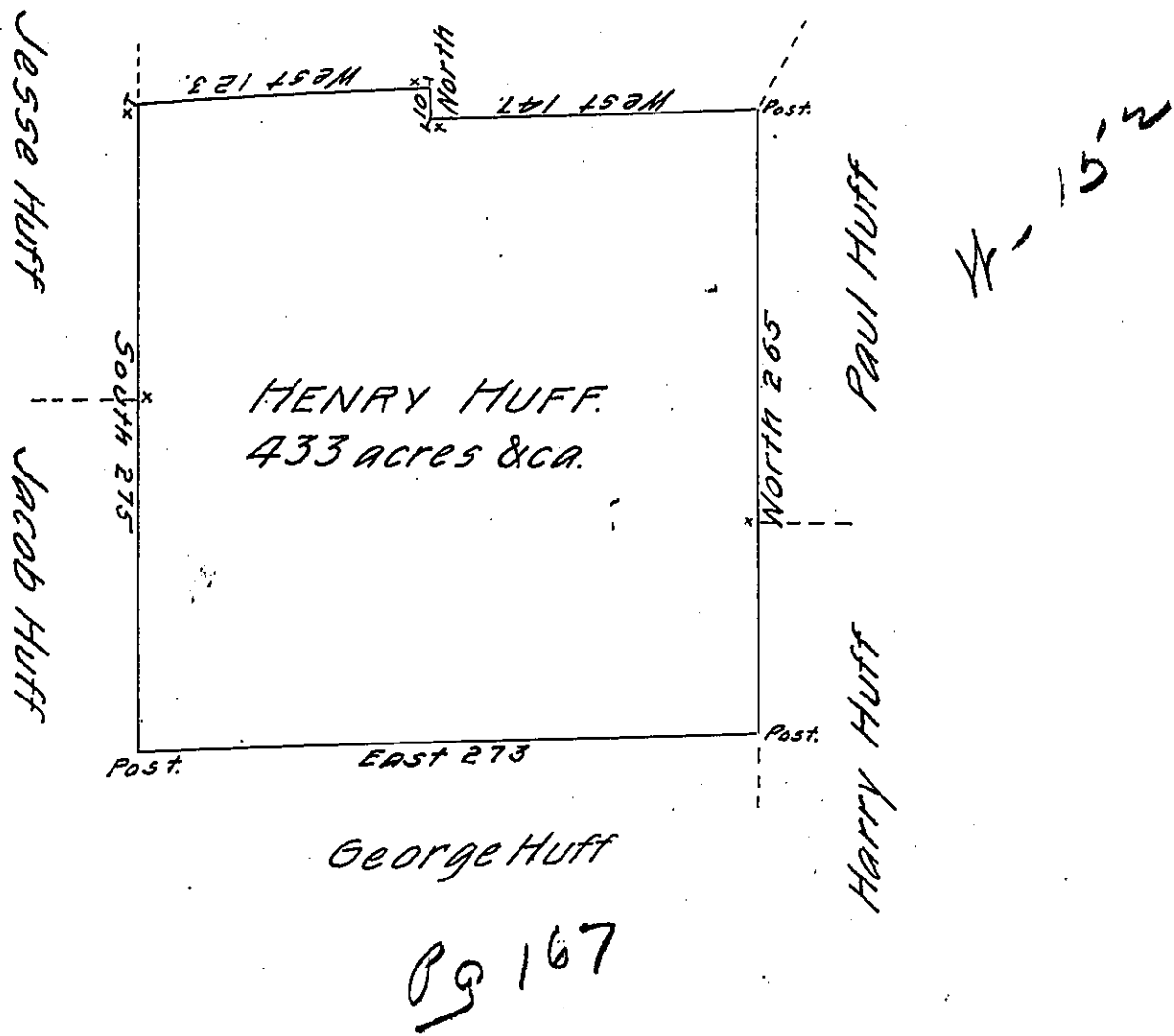


C 86 - 78



Pg 167

Situate on the Waters of Tonollaway Creek in Bethel Township, Bedford County, Containing 433 ³/₄ ^a with the Usual allowance of Six fe Cent for Roads, &c^a Surveyed for Henry Huff the 28th Day of October 1794, on Warrant dated the 21st Day of February 1794.

p^e George Woods, D. S.

Examined by me December 15th 1808.

To Samuel Cochran, Esq^r
Surveyor General.

John Anderson
Deputy Surveyor

IN TESTIMONY that the above is a copy of the original remaining on file in the Department of Internal Affairs of Pennsylvania, made conformably to an Act of Assembly approved the 16th day of February, 1833, I have hereunto set my Hand and caused the Seal of said Department to be affixed at Harrisburg, this twenty-fourth day of April 1905.

George D. Pearson
Secretary of Internal Affairs.